



Vehicle versus Pole

Ken Pattie

1



2



Powerco Network

2017 CAR V POLE – OMS FAULT DATA



Number of Reported Incidents - 96
 Number of Poles replaced – 57
 SAIDI - 10.68 minutes
 SAIFI - 0.099
 Estimated Cost Powerco - \$500k + Social Cost - \$23,669,400
 Total number of incidents - Unknown (162)
 Fatalities – 4 (3 on Powerco poles)
 Serious harm – 26 (22 on Powerco poles)



Concept Project

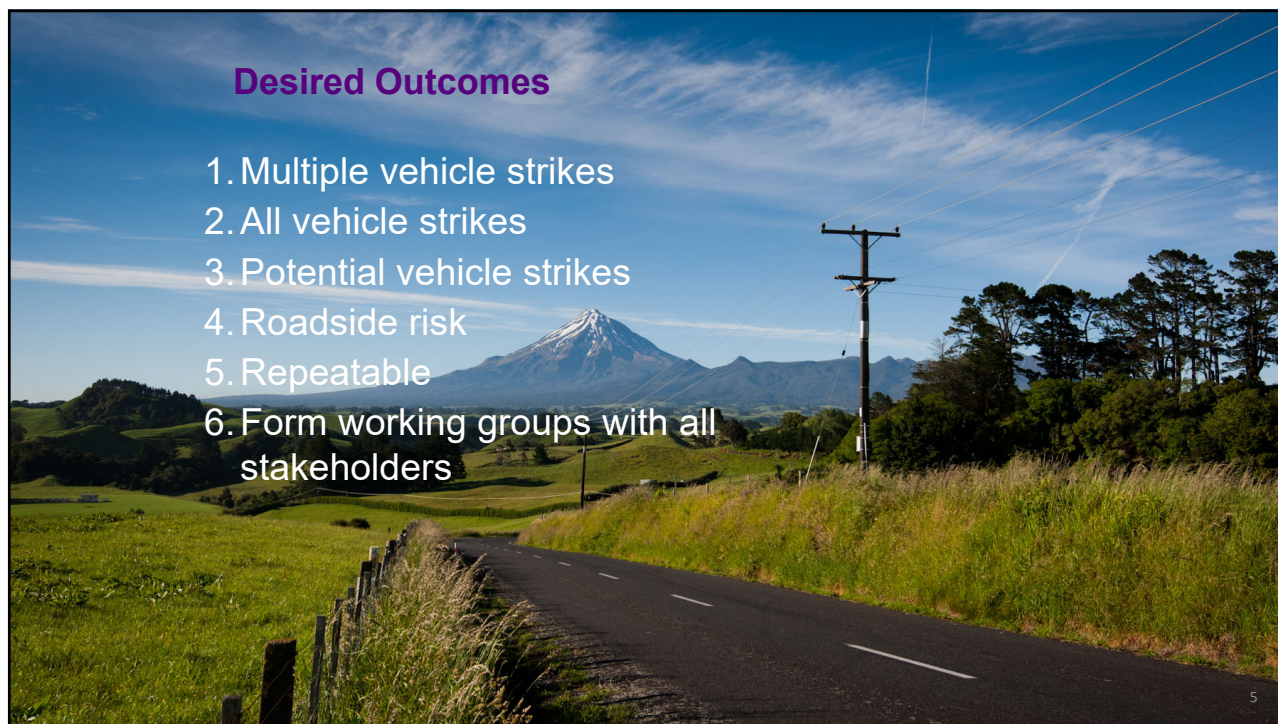
AIM: IDENTIFY POLES THAT HAVE A POTENTIAL FOR CAR V POLE



Identified High Risk Poles
 Using Powerco and Waka Kotahi
 Data (loss of control crashes
 only)

Positive Results


1. Identified poles hit multiple times
2. Identified over double the amount of pole strikes
3. Identified poles of interest



Desired Outcomes

1. Multiple vehicle strikes
2. All vehicle strikes
3. Potential vehicle strikes
4. Roadside risk
5. Repeatable
6. Form working groups with all stakeholders

5

 **Powerco solution: a location technology approach**

What Powerco poles are at risk of a **car v pole** collision?

What is the frequency of different crash **severities** at each pole?

What **factors** are related to car v pole crashes?

What is the **risk of the road** in relation to car v pole crashes?

What **side of the road** has the greatest risk of car v pole crashes?

6

Data sources

Waka Kotahi crash data. Data dates back from 1980 till today. Important attributes:

- Crash Severity (Fatal, Serious, Minor and Non-injury).
- Date and time.
- GPS Location (final position of the car).
- Weather conditions.
- Vehicle Direction (North, South, East or West).
- Speed limit of the road.
- Object Struck.

Waka Kotahi road maps were used instead of Powerco road maps for the following attributes:

- Traffic flow
- Slope
- Curve

Pole data and locations could be accessed in the Powerco data base.

- Pole Type
- Location

Ministry for the Environment

- Average annual rainfall

7

Car v pole at a glance

Injury	Count
Fatalities (Powerco)	189
Serious Injury	905
Minor Injury	2,050

Crash type	Count
All Crashes	159,884
Lost control crashes	24,694
Crashes involving poles	8,640

Poles	Count
Total poles	334,856
Powerco pole fleet	267,000
Poles hit once	7,168
Poles hit more than once	1,472
Powerco poles hit once	4,803
Powerco poles > 1	825

Number of crashes within 20m	Pole count
1	7,168
2	1,051
3	254
4	76
5	53
6	21
7-11	17

8

8



Car v pole crash factors

Weather	Count	Percent
Fine	6478	74%
Heavy rain	453	5%
Light rain	1680	19%
Mist or Fog	140	2%
Null	43	0%
Snow	8	0%
Posted speed	Count	Percent
10	1	0%
20	2	0%
30	34	0%
40	1	0%
50	4497	51%
60	70	1%
70	554	6%
80	433	5%
90	8	0%
100	3202	36%
Road seal	Count	Percent
End of seal	1	0%
Null	1	0%
Sealed	8709	99%
Unsealed	91	1%

Intersection	Count	Percent
No	6261	71%
Yes	2541	29%
Road curvature	Count	Percent
Curved	3890	44%
Null	3	0%
Straight	4909	56%
Road gradient	Count	Percent
Flat	7311	83%
Hill Road	1388	16%
Null	103	1%
Natural light	Count	Percent
Bright sun	1906	22%
Dark	4397	50%
Overcast	2093	24%
Twilight	401	5%
Unknown	5	0%

Case Study 1 Kimbolton

- Pole ID P36852
- Type Mass Reinforced with a concrete foundation
- Two fatal crashes 1987 1991
- Minor damage on pole base
- No feeder outages recorded – no records of vehicle v pole in Pole bases
- Extra high risk road segment and pole

Case Study 2 Waihi

- Pole ID: 301635.
- One car vs pole crash noninjury.
- 34 Crashes near the pole since 1993.
- No fatal or serious crashes.
- Extra high road segment and pole risk
- 794 Customers on this feeder.
- 284 Customers down stream from isolation point.



11

Next Steps

- Complete Importing layers into overhead planning tool (ArcGIS).
- Site checking (Roading engineers, Line designers and overhead asset engineers.)
- Redesign extra high-risk poles.
- Design standards to account for roadside risk.
- Create risk and consequence heat mapping.
- Smart investment tool.
- Associating cost to life and injury.
- Associating cost to asset damage.
- Using road risk for ground mounted assets.

Pole hit June 2012 Fatal. Pole was replaced in the same location the next day.

Draft Investment Value

Value Measure	Value	↑
Investment Cost	(19,296)	
Environment Risk	(74)	
Financial Benefit	(9)	
Project Execution Risk	0	
Legal And Compliance Risk	0	
Customer and Reputation Risk	118	
Financial Risk	1,933	
Total	27,660	

[Edit Value for Recommended Alternative](#)

HK1

12

Slide 12

HK1 Hugo King, 16/06/2021