

H&S WORKSHOP | 2020

COVID—19
EDITION

- Session 1: 29th Oct
- Session 2: 5th Nov
- Session 3: 12th Nov

Thank you to our
presenters and to you
our audience for your
attendance.

EEA value your support

eea

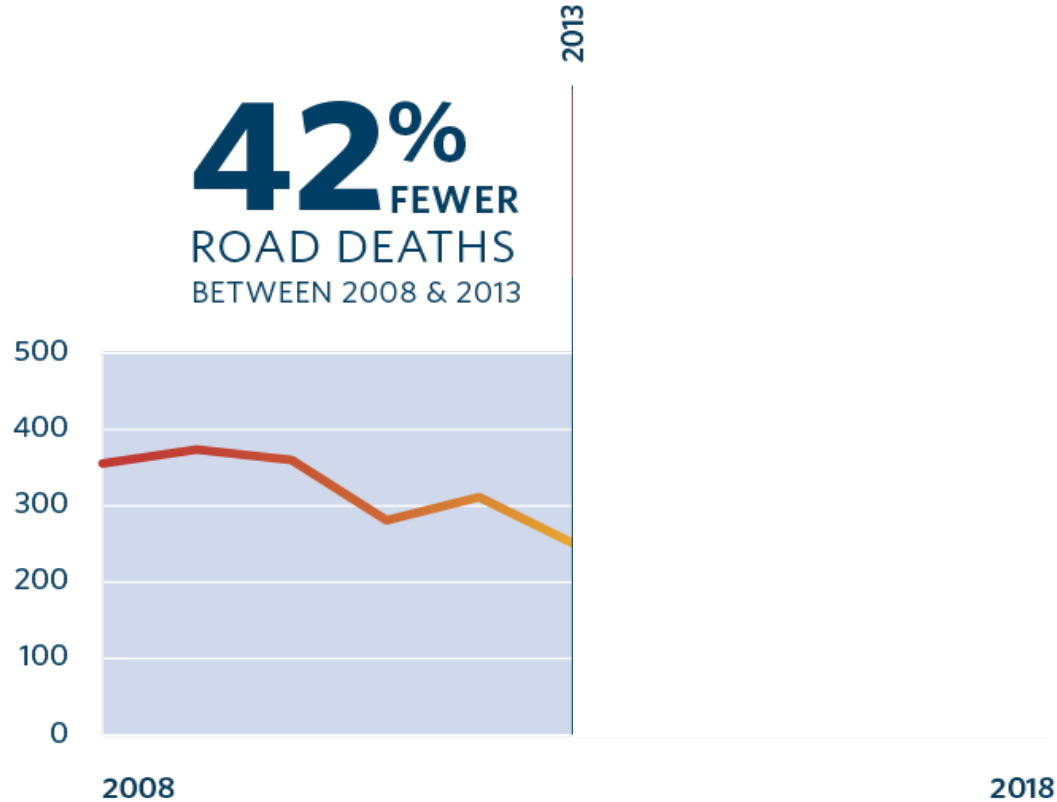
Electricity Engineers'
Association

Road to Zero

Work Related Road Safety



NZ's road safety performance



We need an all of system response

A Safe System summary of annual road deaths 2019

People

353 DEATHS 

130 Light vehicle drivers (25+)

32 Young drivers (16-24)

79 Passengers

56 Motorcyclists

32 Pedestrians

13 Cyclists

10 Truck drivers

1 Bus driver

Research suggests that around **25 PERCENT OF ROAD FATALITIES INVOLVE A PERSON DRIVING FOR WORK** [Lilley, 2019].

Roads & roadsides



82%* died on roads with a medium or higher IRR**

73%* died in areas defined as rural

177 died on a state highway

182 deaths involved the vehicle hitting a roadside object

114 died in head-on crashes

*Six month sample July-December 2019
**Infrastructure risk rating KiwiRAP/UrbanRAP assessment

Speed

72%* died on roads with a speed limit set higher than the SAAS*

55%* died on roads in the Top 10% requiring speed management

*Safe and appropriate speed

Vehicles



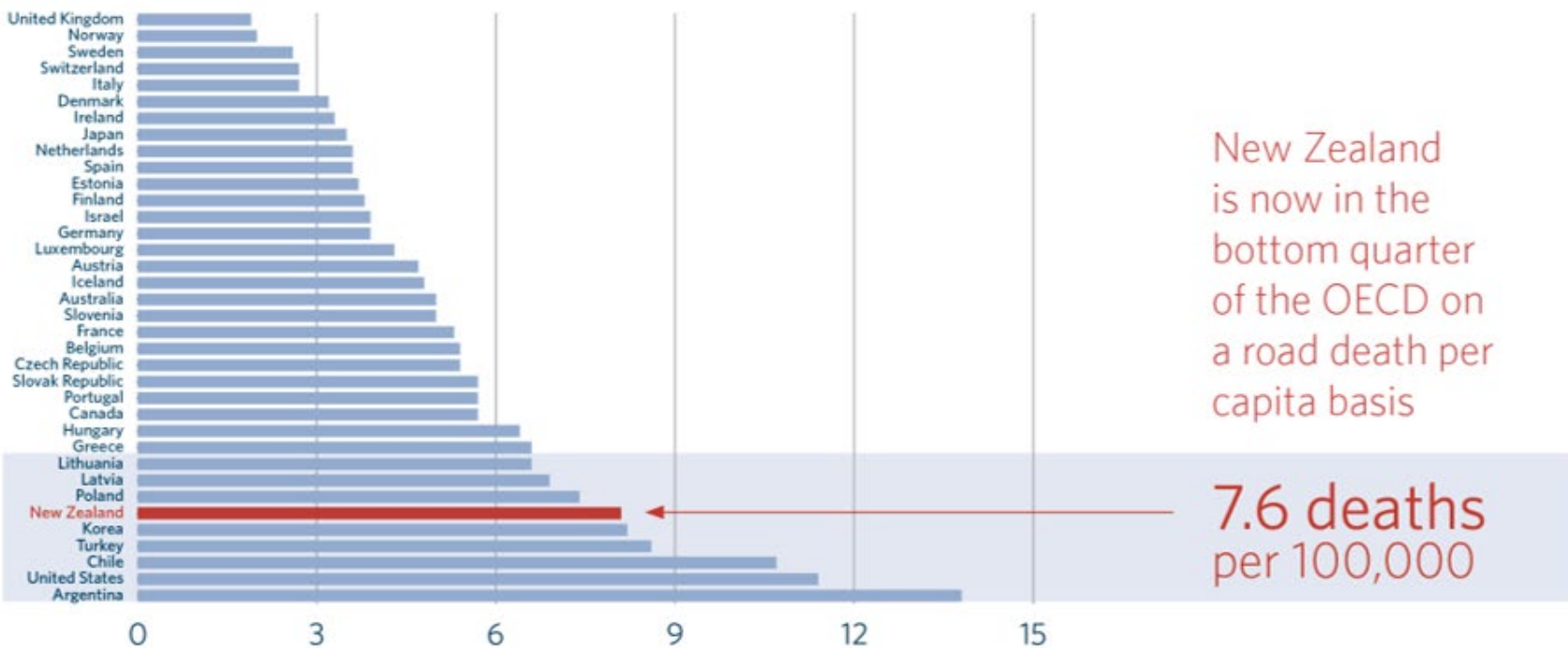
47%* died in 1-star or 2-star vehicles

81 died not wearing a seatbelt

67 died in crashes involving a truck

57 died in crashes involving motorcycles

International performance



Road Safety evolution in New Zealand



HISTORICAL
APPROACHES



2009



2010



2011-ONGOING



2015



2020
AND BEYOND

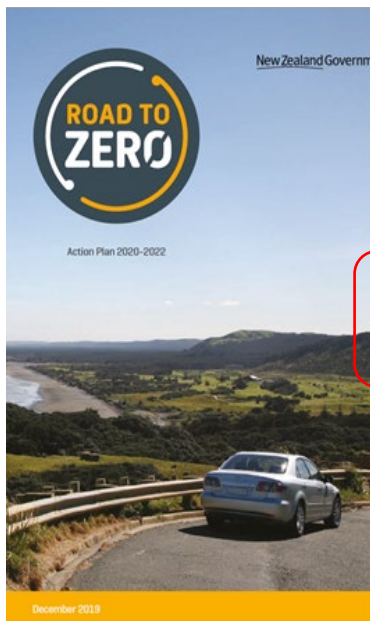
Road to Zero - Strategy outline



Vision:

A New Zealand where no one is killed or seriously injured in road crashes

The Action Plan (2020-2022) *includes 15 actions*



Focus area 1:
Infrastructure & Speed

1. Invest more in safety treatments and infrastructure improvements
2. Introduce a new approach to tackling unsafe speeds ('Tackling Unsafe Speeds')
3. Review infrastructure standards and guidelines
4. Enhance safety and accessibility of footpaths, bike lanes and cycle ways ('Accessible Streets')

Focus area 2:
Vehicle safety

5. Raise safety standards for vehicles entering the fleet
6. Increase understanding of vehicle safety
7. Implement mandatory anti-lock braking systems (ABS) for motorcycles

Focus area 3:
Work-related road safety

8. Support best practice for work-related travel
9. Strengthen the regulation of commercial transport services

Focus area 4:
Road user choices

10. Prioritise road policing
11. Enhance drug driver testing
12. Increase access to driver licensing and training
13. Support motorcycle safety
14. Review road safety penalties

Focus area 5:
System management

15. Strengthen system leadership, support and co-ordination

The Action Plan (2020-2022) Work-Related Road Safety



Focus Areas	
Strengthen commercial transport regulation	Review of log book and work-time requirements
	Review of the roles and powers of regulators
	Investigate the future role of telematics
Support best practice for work-related road safety	Data analysis
	Develop and implement best practice standards and guidelines
	Develop and implement standards around safe driving for government agencies
	Support and encourage private sector initiatives in establishing best practice road safety standards



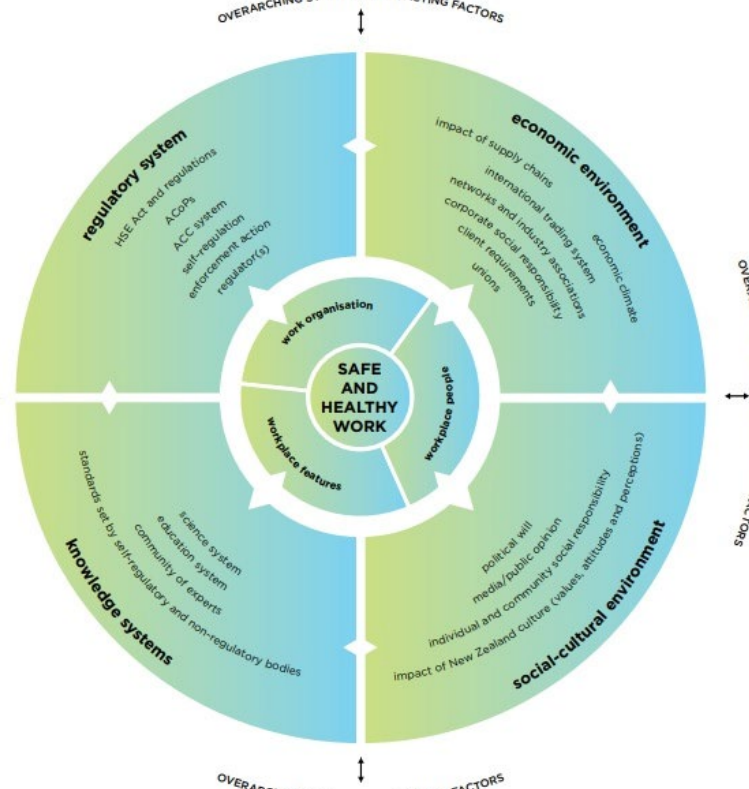
Businesses and their associations



Te Kaporeihana Āwhina Hunga Whara



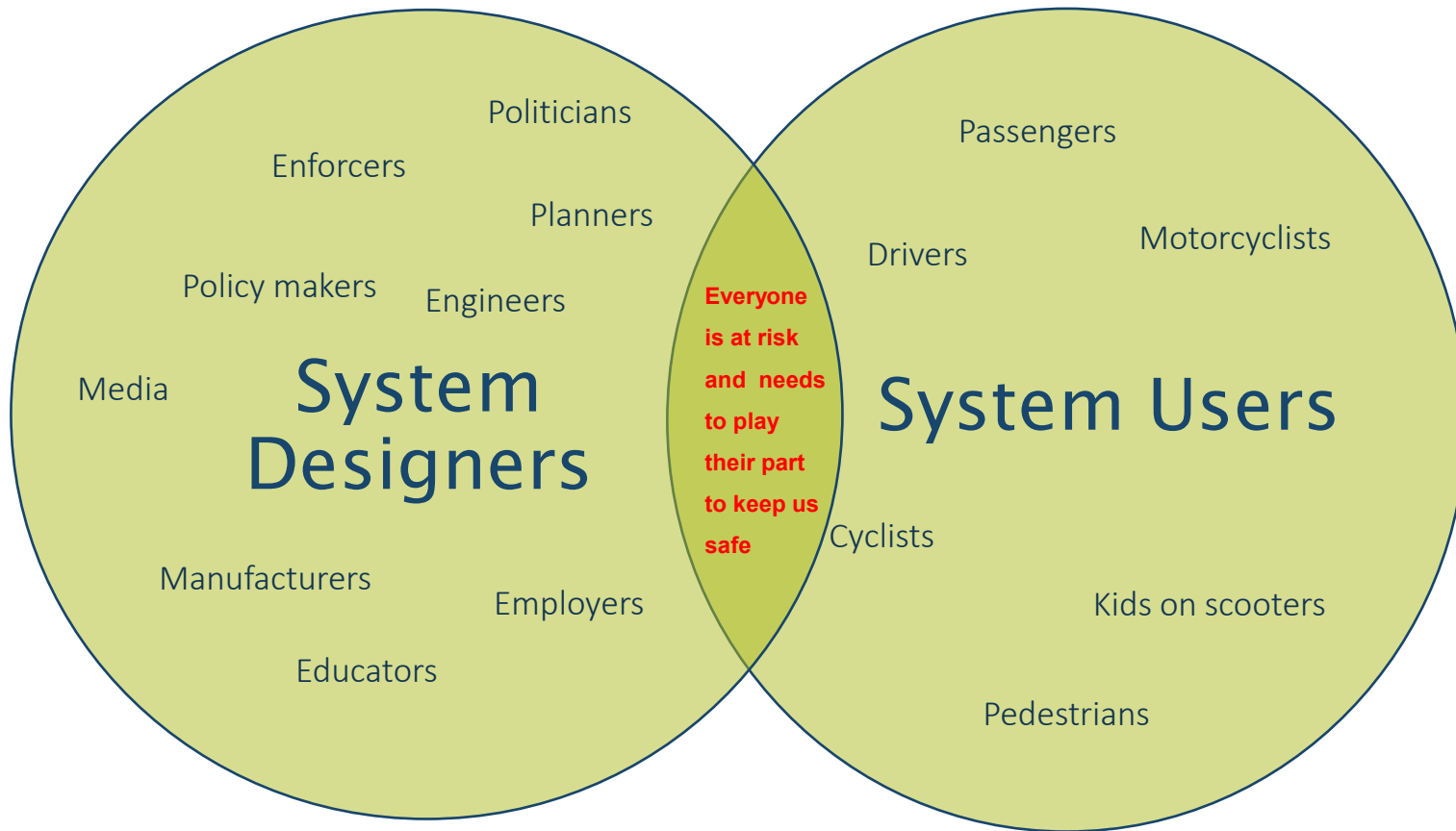
How does Road to Zero.....



...and workplace safety environment/systems inter-relate?

Image from Independent Taskforce on Workplace Health and safety

Who is at risk?



Workplace vehicles that you can be seen

Vehicles that can be used for recreation or work and may also be used on the road network

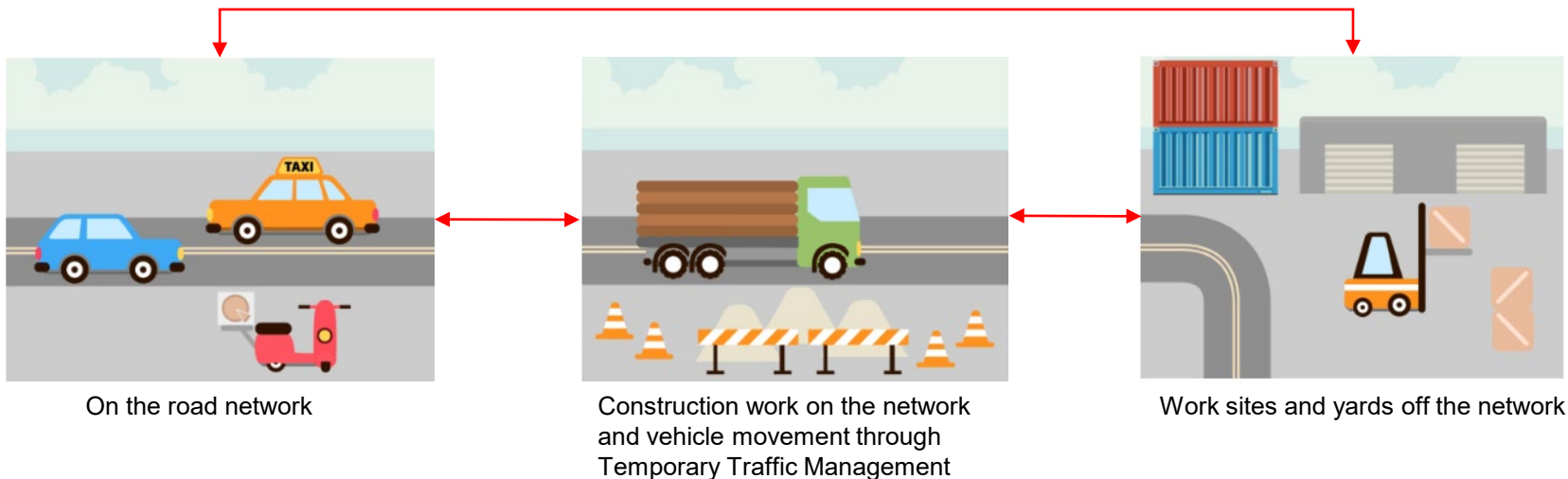
Private vehicles that could be used for work purposes but are not commercial vehicles – “Grey Fleet”



Where does the risk occur?



Risk also occurs when moving between the areas

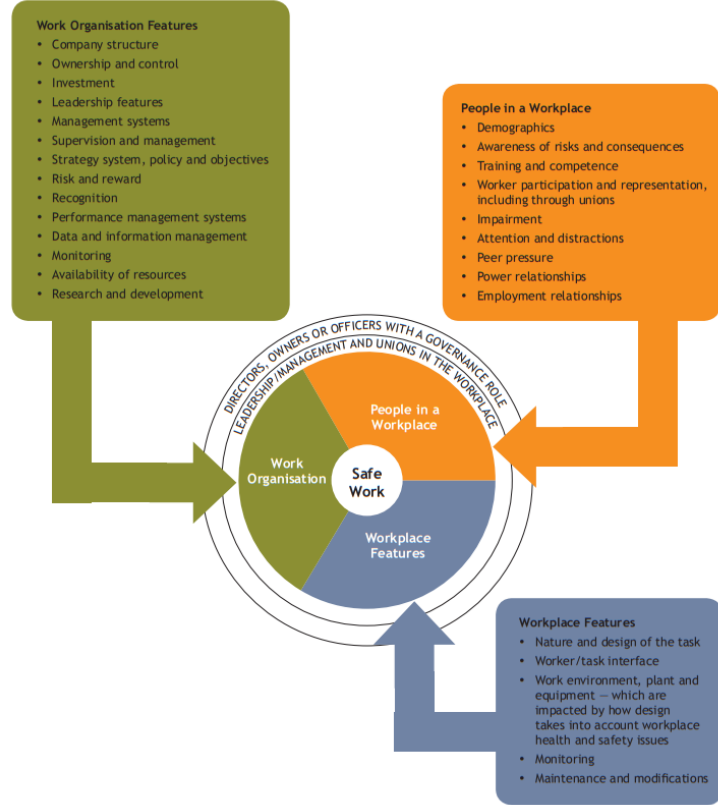


CAS Data 2015 – Sept 2020

Category	Fatal	Serious	Minor	Total
Road crashes occurring in temporary speed limit zones (10-70 k/h)	32	235	1120	1387
Objects struck (Roadworks)	1	9	58	68

Images from EU-OSHA

How does Road to Zero.....



...and workplace safety at a company level inter-relate?

Image from Independent Taskforce on Workplace Health and safety

1) Managing risks of vehicle use

Key Question: "Currently, are you and your organisation managing the risk associated with road use with the same level of diligence and consideration as every other work related risk and hazard?"

2) Reliance on the 'Silver bullet' - one big solution!

Key Question: "Is your organisation still looking for the silver bullet in contrast to a comprehensive approach to improving work related road safety?"

3) Work Related Road Safety Policy and Procedures

Key Question: "Does your organisation have a work related road safety policy?"

4) Data collection Key Question:

"How comprehensive is your organisations vehicle incident data?"

5) Infringement monitoring

Key Question: "What management processes occur in your organisation in regard to traffic infringements?"

6) Licence History checks

Key Question: "Is there a potential for employees within your organisation to be currently unlicensed?"

7) Dedicated driving safety (safe road use) personnel

Key Question: "Who within your organisation is responsible for vehicle related safety?"

8) Communication and Education of Road Safety

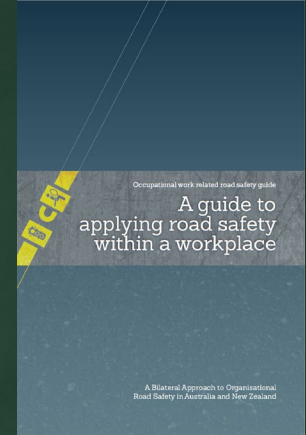
Key Question: "Within your organisation what mechanisms are used to actively promote vehicle safety?"

9) Fatigue Management

Key Question: "Is there a fatigue management program that addresses fatigue risk prior to driving and during driving?"

10) Safe Vehicles

Key Question: "Is your organisation buying or leasing the safest vehicles they can and is after market safety technology such as GPS or fatigue monitoring being fitted?"



Resources to help with work-related vehicle safety		
Road to Zero Strategy	Outlines the Strategy and Actions for Road to Zero	https://www.transport.govt.nz/multi-modal/keystrategiesandplans/road-safety-strategy/
National Road Safety Partnership Program	Australian collaborative network for road safety with resources and webinars (NZ can use)	https://www.nrspp.org.au/
Driving for better business (UK)	United Kingdom collaborative network for road safety with resources and webinars (NZ can use)	https://www.drivingforbetterbusiness.com/
EU-OSHA workplace vehicle tool	European Union guide for workplace vehicle safety	https://eguides.osha.europa.eu/vehicle-safety/
Worksafe BC workplace vehicle website	Canadian regulatory website with resources, videos and other information	https://roadsafetyatwork.ca/
KiwiRap (Regional Highway risk maps)	Regional highway risk maps that can be used for journey planning	http://www.kiwirap.org.nz/regional_brochures.html
A guide to applying road safety within a workplace	Bi-lateral vehicle safety guidance developed between NZ and Australia	https://www.nrspp.org.au/resources/a-guide-to-applying-road-safety-within-a-workplace/
Driver licence check	Tool for monitoring workers licence status	https://www.nzta.govt.nz/driver-licences/driver-check
Austrroads	Collective of the Australian and New Zealand transport agencies	https://austrroads.com.au/