

New Zealand Transport Agency

Our Role in Health and Safety

Tim Barry / Senior Manager Safety and Wellness
Safety, Health and Environment Group

New Zealand Transport Agency

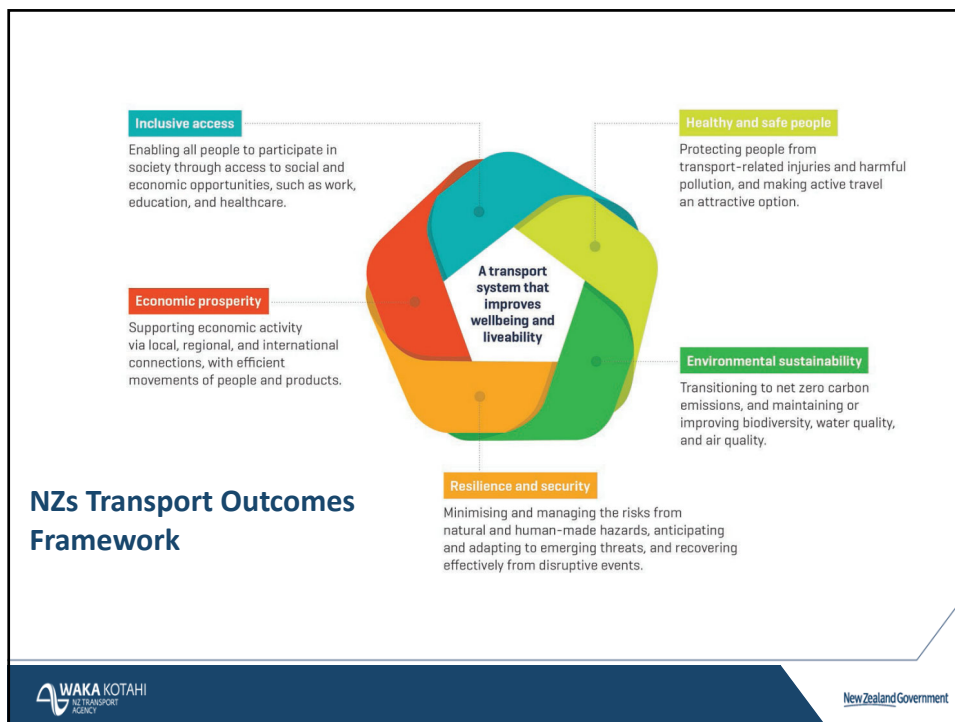
1

New Zealand Transport Agency

Putting Our People at the Centre of Everything we Do



2



3

As an Asset Owner & Crown Agency

Our Duties

Health and Safety at Work Act
Design and maintain structures and physical assets that eliminates, or controls, Health and Safety risks associated with its operation and use.
[Health and Safety By Design](#)
Discussion: Health and Safety in Design Workshops
Considerations for Third Parties Working on / around NZTA Assets

Land Transport Act
Contribute to an effective, efficient and safe land transport system in the public interest.
Investigate and review accidents and incidents involving transport on land.
Manage the state highway system, including planning, funding, design, supervision, construction and maintenance operations
[New Zealand Transport Agencies: Legal Framework](#)

WAKA KOTAHI
NZ TRANSPORT AGENCY

New Zealand Government

4

As a Client Engaging Contractors

HSWA Duties

Extension of Duties to employees to contractors engaged to provide goods and services to NZTA

These duties require NZTA to develop systems and processes that allow them to transfer knowledge and information relating to health and safety to its contractors throughout the contract life cycle.

There is a requirement for NZTA and its supply chain partners to demonstrate and evidence cooperate and consult around the identification and control of health and safety risks.

NZTA has specific obligations to monitor contractor performance and effectiveness of risk controls. This is undertaken through site inspections, monthly performance reports and assurance audits.

Contractor Expectations

[NZTA Contractor Management](#) framework has been developed in consultation with NZTA design and construction contractors

Elements of the framework have been designed, piloted and progressed through the NZTA HS Industry and leadership forum.

Elements of the framework have been implemented across NZTA and its contractor environments.



New Zealand Government

5

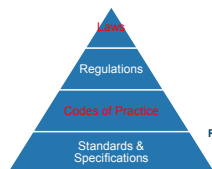
As the owner of Code of Practice (TTM)

NZTA develop and maintain the Code of Practice for Temporary Traffic Management, which details how risks to workers and customers health and safety may be protected through the use of reduced traffic speeds, signage and barriers.

NZTA are not, at this stage, a regulator of Worksite Health and Safety, even though workplaces may include the transport network it has safety responsibilities over.

This causes confusion and limits the ability of "the system" to provide clarity around what good looks like and how organisations may demonstrate effective risk controls

HSWA & CoPTTM



risk based approach: "Show me how?"

HSWA and COPTTM:

- Understand and Controlling Risks
- Setting Out Traffic Management Equipment
- Need to show how HSWA Obligations are met and then, if TTM is needed, how that has been set out



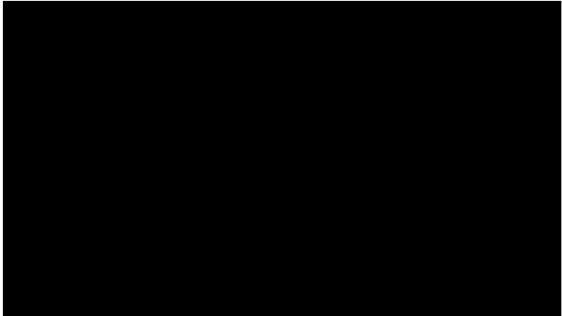


New Zealand Government

6

Transport Agency Network Health and Safety

Our Regulatory Role



7

Transport Agency Network Health and Safety

Inform and Influence Behaviour

NZTA works with Police and others to provide information and guidance to enable improved road and transport network health and safety outcomes.

Examples:

- [School Road Safety Education](#)
- Customer Behaviour Messages
- Young Drivers Resources
- Road Traffic Resources

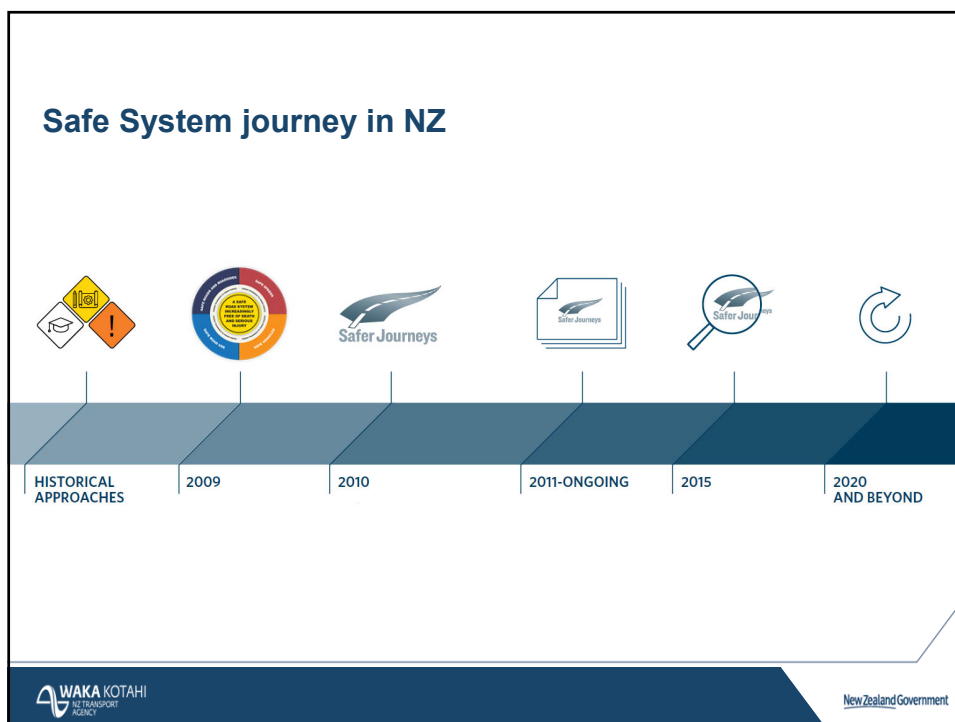
[Safer Journeys Resources](#)



8



9



10

3 We need to share responsibility

Everyone needs to play their part to keep us safe

The diagram consists of two overlapping light green ovals. The top oval is labeled 'System Designers' and contains the following roles: Enforcers, Politicians, Policy makers, Media, Planners, Engineers, Insurers, Utility providers, Educators, and Employers. The bottom oval is labeled 'System Users' and contains: Drivers, Passengers, Motorcyclists, Cyclists, Scooters-riders, and Pedestrians. The overlapping area between the two ovals is shaded a darker green.

WAKA KOTAHAI
MULTIMODAL TRANSPORT AGENCY

New Zealand Government

11

Safe system challenges for NZTA and New Zealand

- Develop a good understanding about all road users, speed, vehicles, roads and roadsides
- Focus on reducing crash forces to survivable levels
- Challenge the 'default settings' that are inherently unsafe
- Help change the road safety conversation away from driver blame
- Be ambitious about eliminating unnecessary death and injury from our roads
- Deliver road safety outcomes within the context of liveable communities

WAKA KOTAHAI
MULTIMODAL TRANSPORT AGENCY

New Zealand Government

12

Transport Agency Network Health and Safety: Emerging Areas

WorkSafe and NZTA

Increasing focus of NZTA in its role as regulator

Example of CoPTM roadsides shows potential for co-regulation / changes to regulation model for worksites within transport infrastructure and operations.

Vehicles as Workplaces

Element of "safe system" thinking of how to better influence a proportion of transport network users that could help improve road safety outcomes.

Using the HSWA lens to create a safer road network

NZTA and Government Health and Safety lead forum designing model toolkit for agencies and businesses to better understand and manage the risks associated with driving for work.

Relevant and opportunity for leadership from utility providers



New Zealand Government

13

Communicating and Consulting

NZTA Forums

Industry Liaison Groups

NZTA Health and Safety Industry Forum

NZTA Health and Safety Leadership Group

Road Worker Health and Safety Improvement Programme

NZTA Health and Safety Collaboration Platform

<https://govt.loomio.nz/g/3r0PzYOB/health-and-safety>

Section of NZTA website to enable us to communicate and consult with our externa; stakeholders around health and safety.

Share information and alerts and enable discussion around improving practices and understanding of good practice examples.



New Zealand Government

14

Te Ahu A Turanga Highway

Earthworks, piling, sub-structures, bridges, planting, pavement.

October 2019

- What risks are we talking about?
- What are the key areas we are seeking to drive high performance health and safety outcomes in?
- In what areas are we seeking a “step –change” in Health and Safety?



New Zealand Government

15

Thank You

Tim Barry / Senior Manager Safety and Wellness
Safety, Health and Environment Group

DDI 64 4 903 2319 / **M** 0277 858 858

E Tim.Barry@nzta.govt.nz / **w** nzta.govt.nz

National Office / Victoria Arcade, 50 Victoria Street,
Private Bag 6995, Wellington 6141, New Zealand



New Zealand Government

16