

WORKSAFE

EEA Workshop

Tony Hetherington
Head of High Hazards, Energy and Public Safety
October 2018



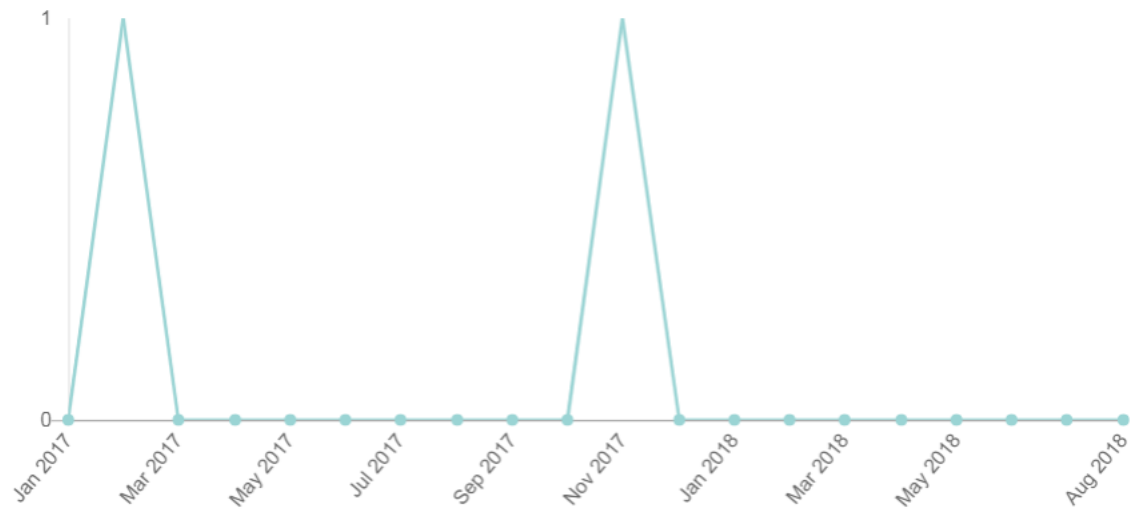


	2016	2017
Fatalities rate (3 year rolling average)	2.1	2.1
Fatalities count (Annual count)	55	65
Serious non-fatal rate (Annual comparison)	14.3	16.0

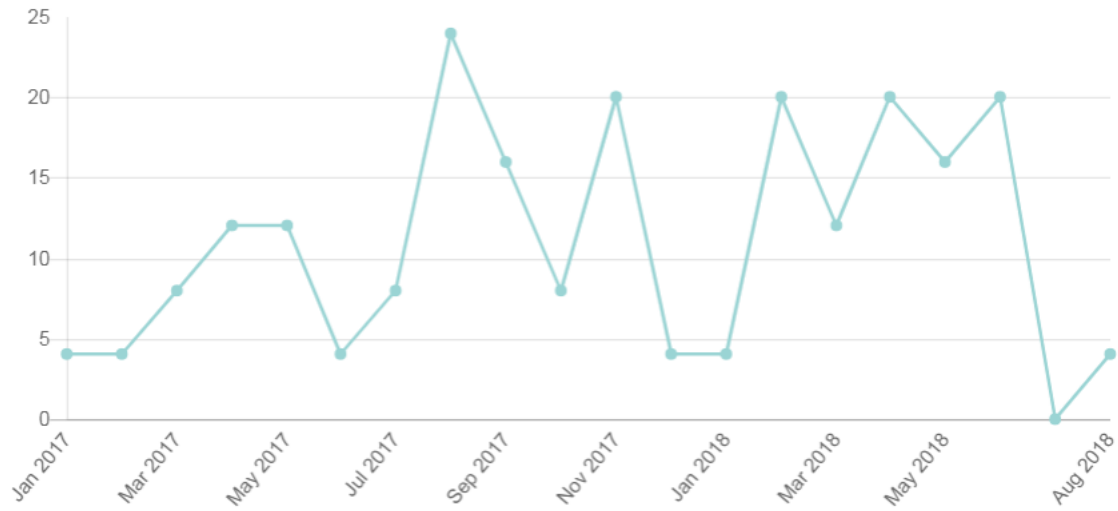


	2018
Fatalities notified YTD	26

**Workplace fatalities for Electricity Supply, all regions, all ages, from
Jan 2017 to Aug 2018**

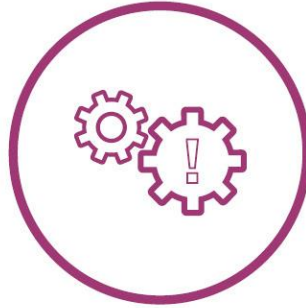


Workplace incidents for Electricity Supply, all regions, all HSWA classifications, from Jan 2017 to Aug 2018





LEADERSHIP



**RISK
MANAGEMENT**

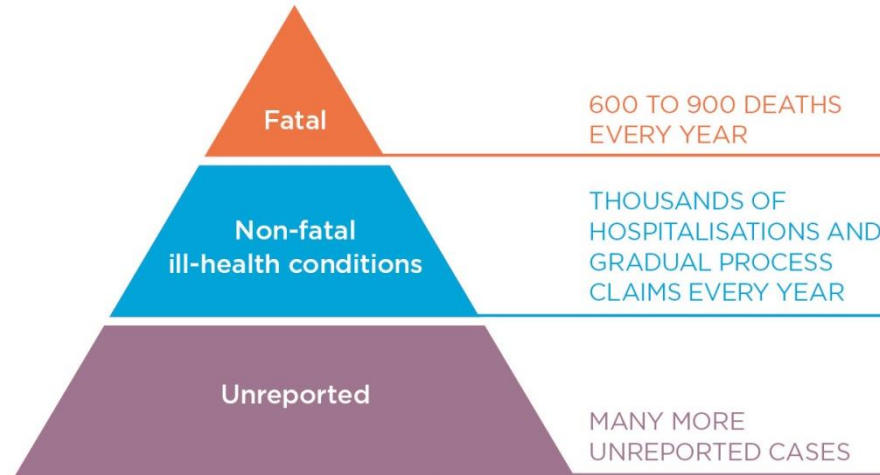


**WORKER
ENGAGEMENT**



RISK
MANAGEMENT

Health





RISK
MANAGEMENT

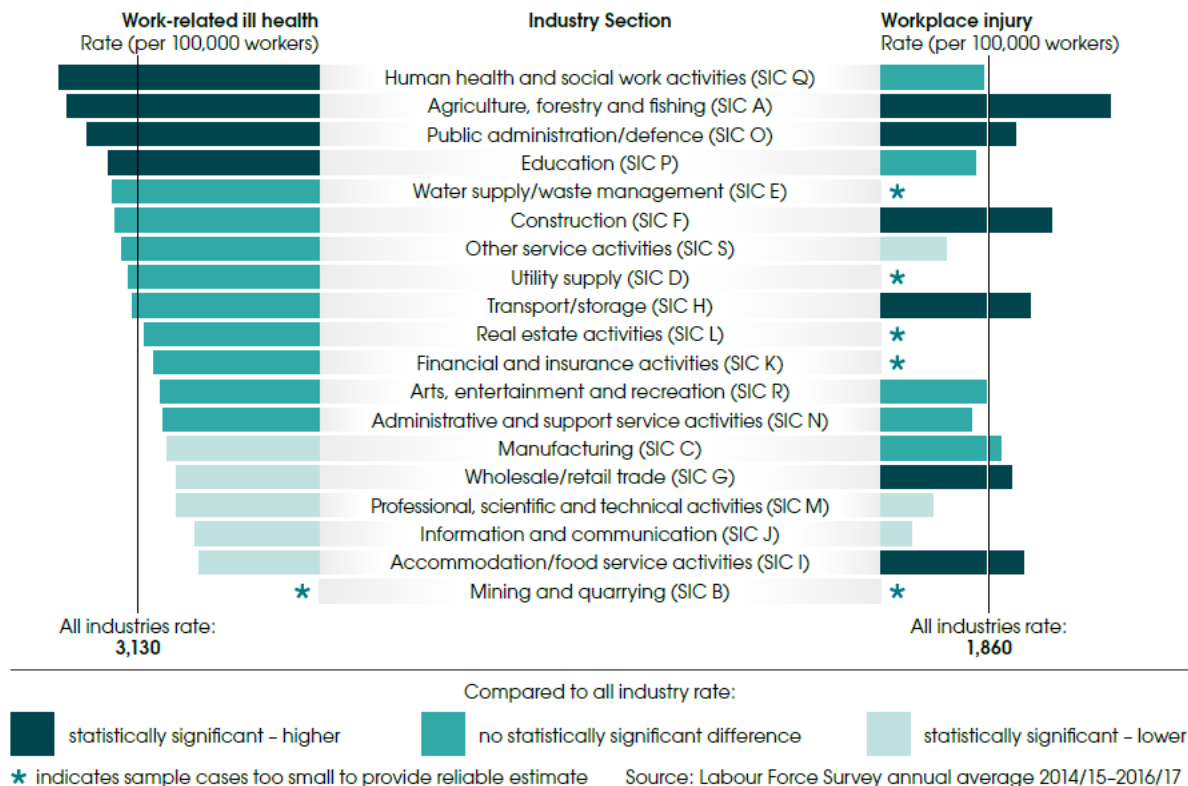
Health





Industries

Rate of self-reported work-related ill health and non-fatal injury by industry





RISK
MANAGEMENT

Psychosocial

40,000

notifications of health and
safety incidents over the
last 4 years

159 were recorded
as bullying

NEARLY HALF
REFERRED ON
(POLICE, ERA)
OR TO PCBU TO
SELF-MANAGE

JUST UNDER
HALF NFA

13
INVESTIGATED -
NO PROSECUTIONS



RISK
MANAGEMENT

Consumers





RISK
MANAGEMENT

Consumers





WORKER
ENGAGEMENT

What we are doing



HEALTH & SAFETY
AT WORK ACT

WORKSAFE
NEW ZEALAND | HAKI HAUARU
AOTEAROA



SAFE+
MAKING HEALTH AND SAFETY WORK

SAFE+

MAKING HEALTH AND SAFETY WORK



Resources and
Guidance

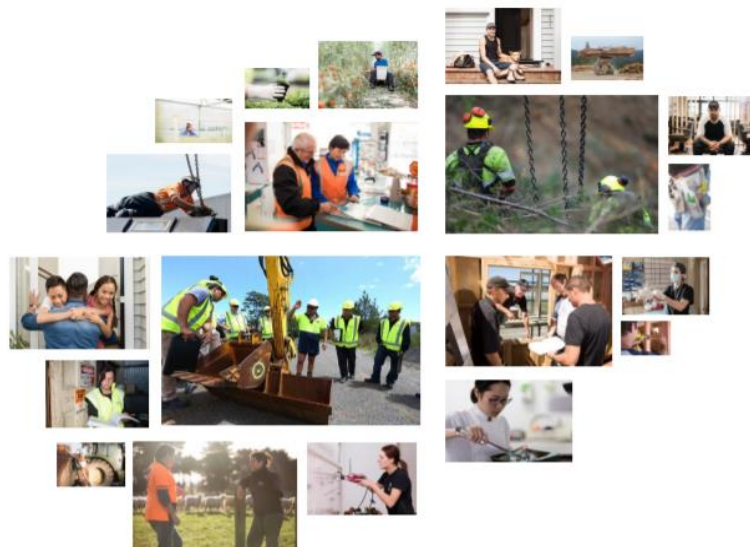


Onsite Assessment
and Advisory Service



Online
Self-Assessment

What we are doing



Health and Safety at Work Strategy 2018-2028

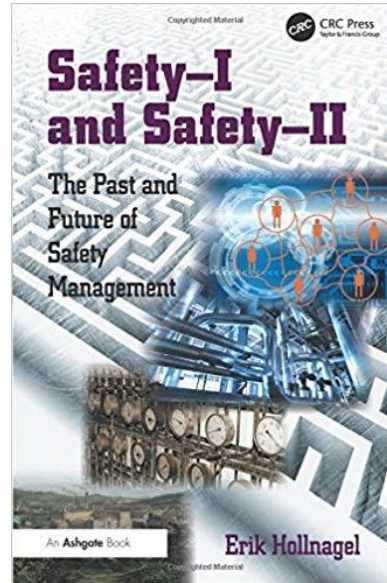
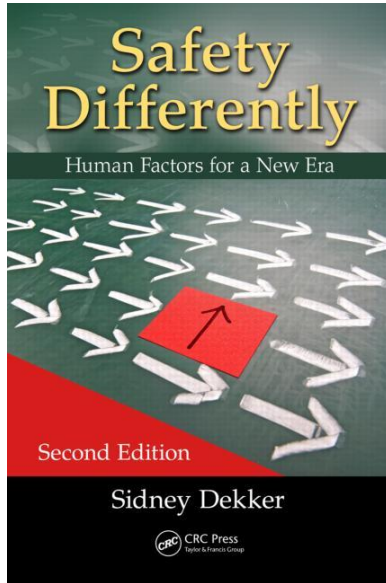
CONSULTATION

April 2018

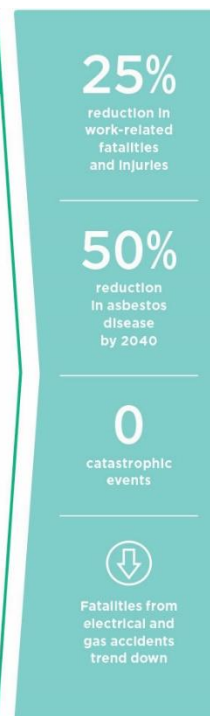
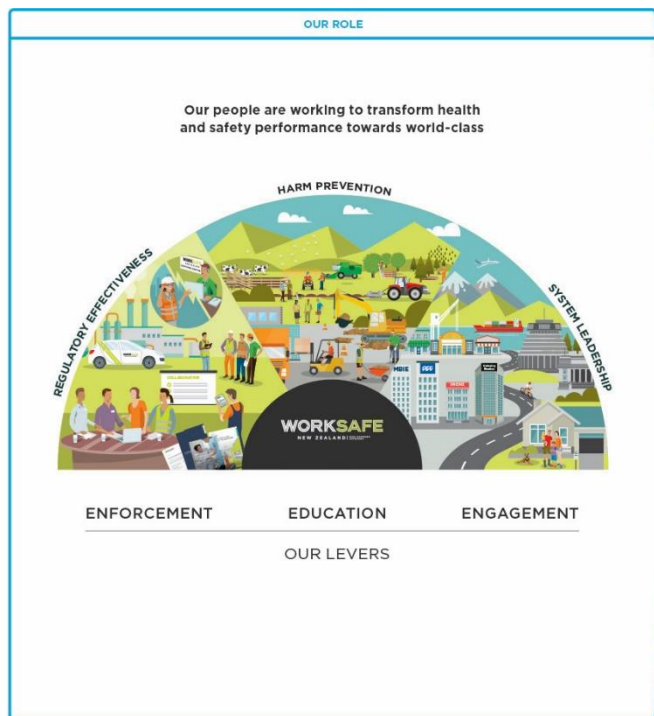


New Zealand Government
Te Kāwanatanga o Aotearoa

Innovation



WorkSafe's strategy 2018-2022:



What we are doing

Single-minded focus

HARM PREVENTION

