



Electricity Engineers'
Association

HEALTH & SAFETY
ASSET MANAGEMENT
PROFESSIONAL
DEVELOPMENT

Critical Risks Update

HEALTH AND SAFETY WORKSHOP 2018

EEA.CO.NZ





Critical risks

**cause the majority deaths
and serious harm**

**even though they are only a
fraction of all our risks**

Risks need to be managed

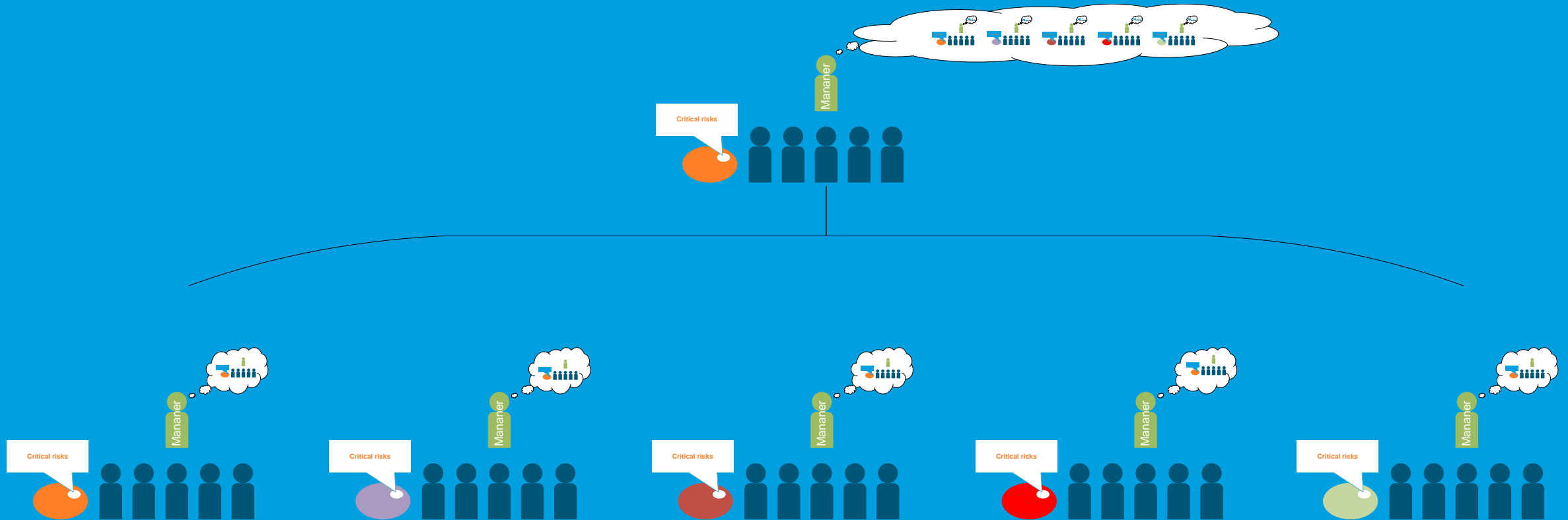
There's a lot of them



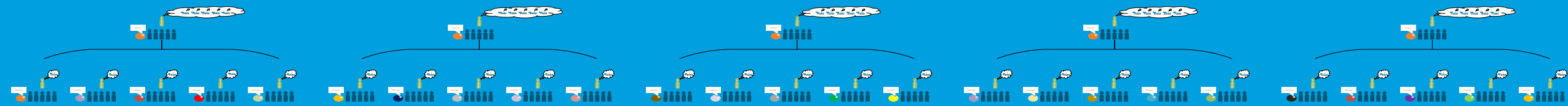
Different teams may have different risks



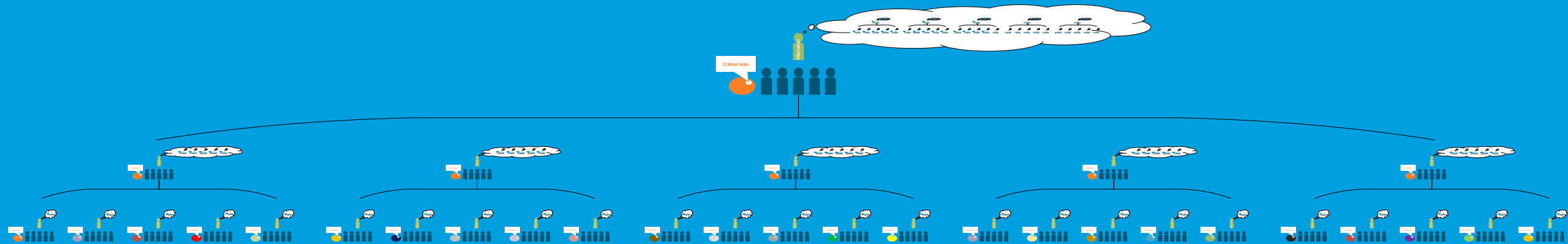
This is a challenge for managers



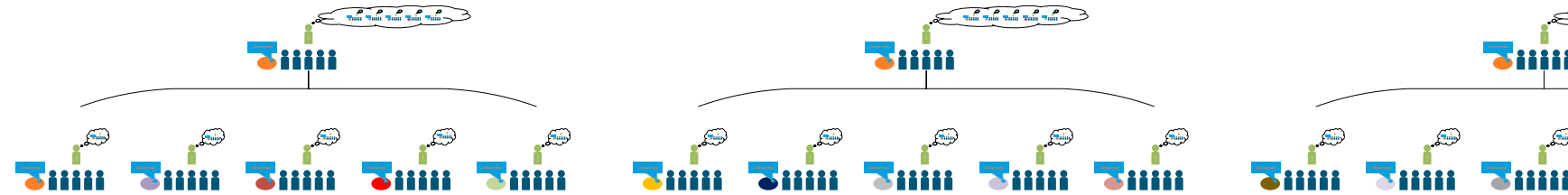
... as you head up the chain the challenge grows



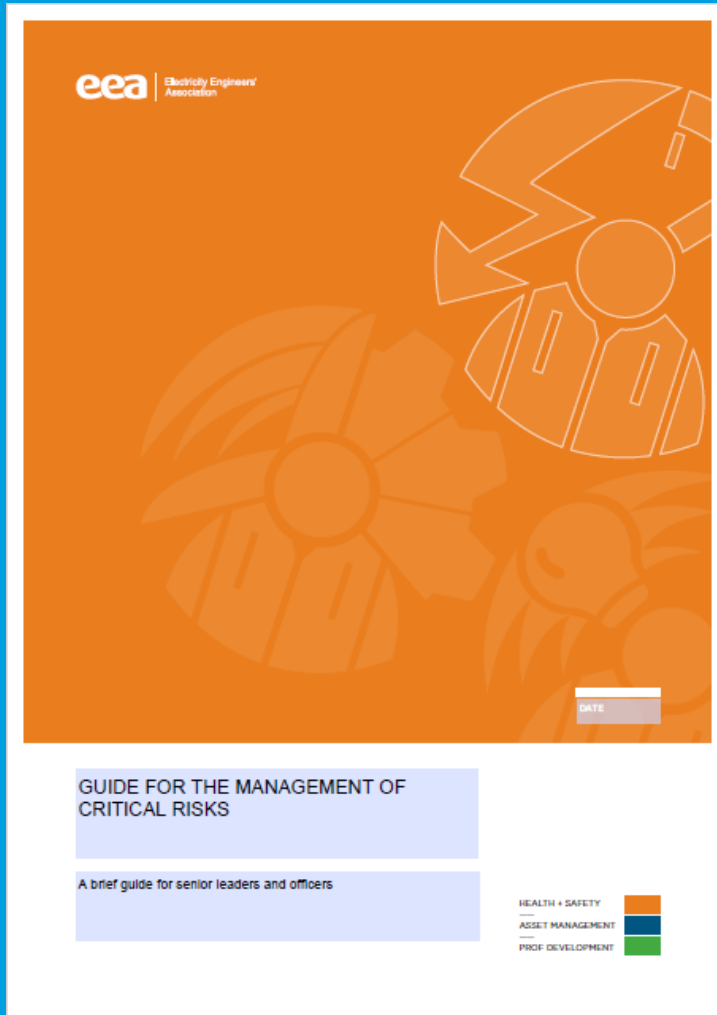
... and grows



Mananer



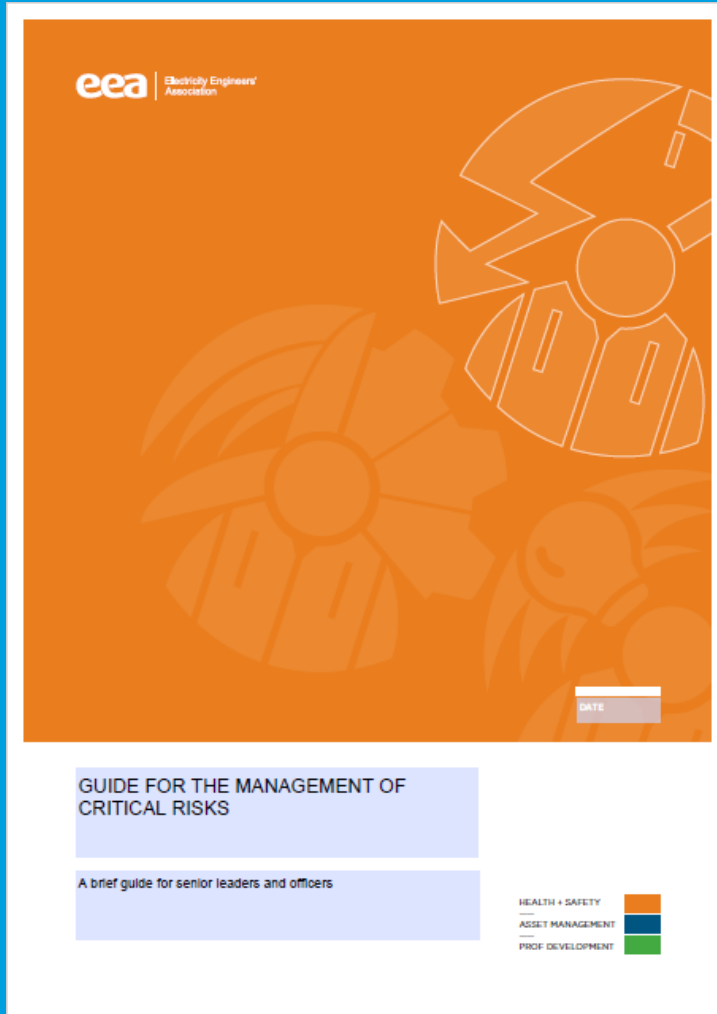
Guide for the management of critical risks



The ESI Critical risks are -

- Traffic management
- Hazardous materials
- Confined spaces
- Work-related ill-health
- Lone working
- Electricity
- Working at height
- Mobile power plant
- Asset failure
- Driving

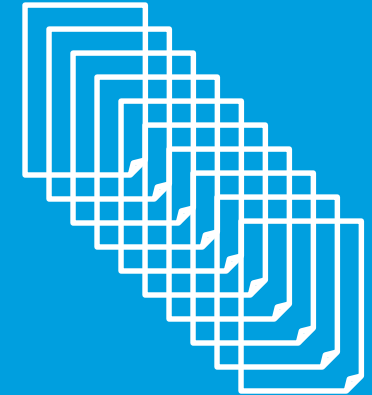
Guide for the management of critical risks



=



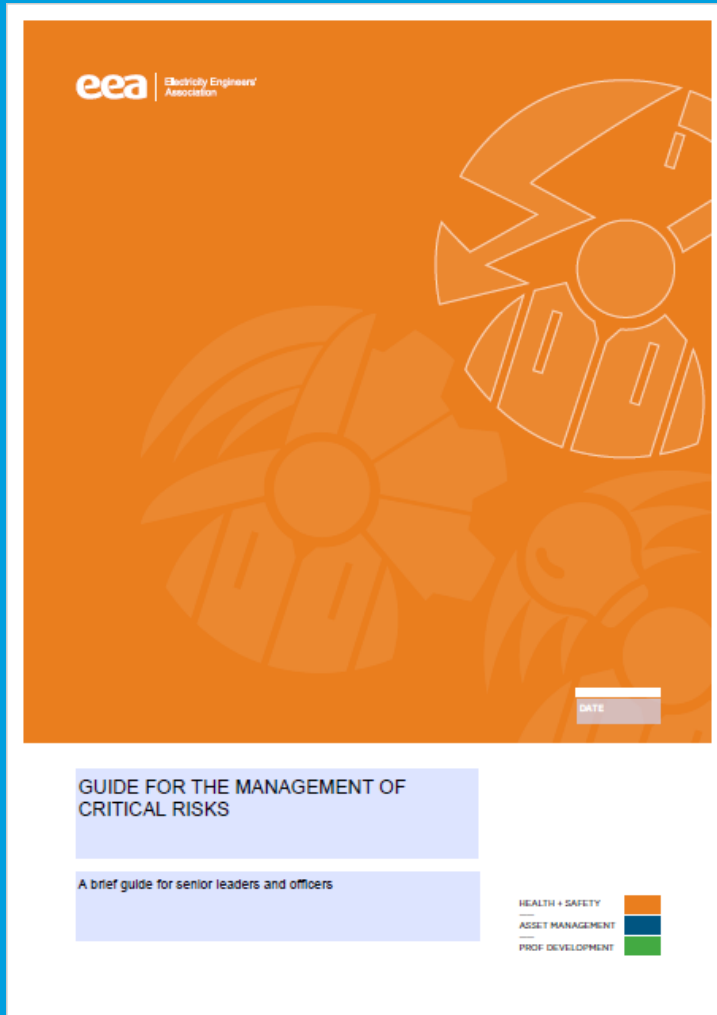
+



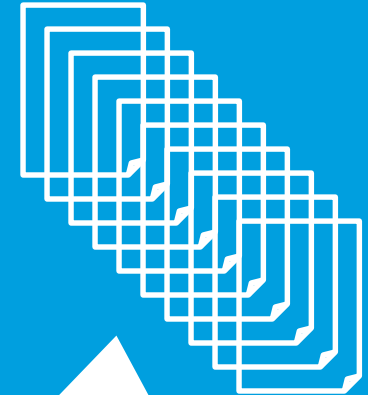
Critical Questions
and guidance

Quick Cards for each ESI critical

Guide for the management of critical risks



Quick cards link to
existing guidance



QUESTIONS and FEEDBACK

