



MAKING HEALTH AND SAFETY WORK

A new toolkit that will help businesses achieve operational excellence.

SafePlus – a Health and Safety Performance Improvement Toolkit

- Defines what good health and safety looks like, above and beyond minimum compliance.
- Assesses businesses and provides them with advice and guidance on how they could improve.
- Supports businesses continuous improvement
- A joint initiative developed by WorkSafe, ACC and MBIE.

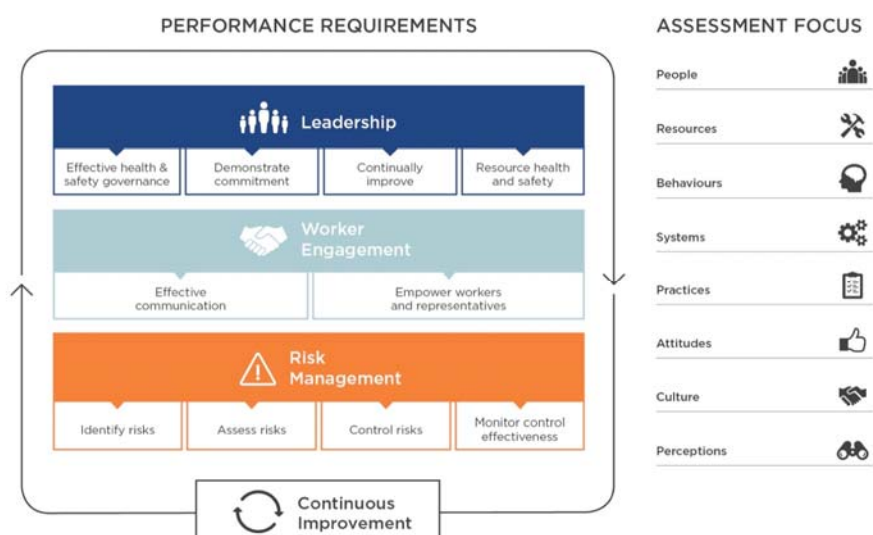
A JOINT INITIATIVE DEVELOPED BY

WORKSAFE
NEW ZEALAND



 **MINISTRY OF BUSINESS,
INNOVATION & EMPLOYMENT**
HĀKINA WHAKATUTUKI

10 Performance Requirements



Measuring Performance

DEVELOPING

The business knows it needs to improve but has not identified what to improve or how. Likely to rely on PPE, administrative controls and informal processes and may respond reactively to address issues.

PERFORMING

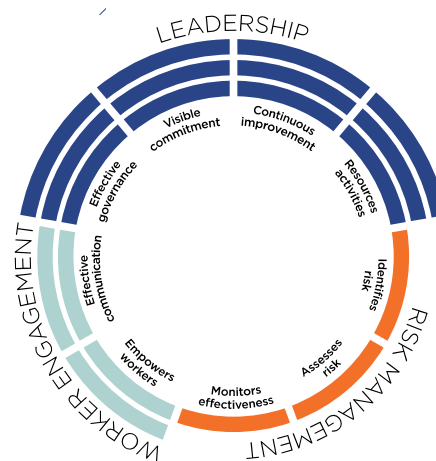
Health & safety performance is reviewed and monitored to support continual improvement. Workers are engaged and empowered. Risks are identified and actions are taken to address root causes.

LEADING

Health & safety is integral to core business activities. There is a sense of ownership from workers at all levels and workers are supported to lead initiatives. The business takes a leadership role in industry to help lift performance.

Illustrating performance

	DEVELOPING	PERFORMING	LEADING
Leadership			
Effective health and safety governance			
Demonstrates visible commitment			
Continually improves performance			
Resources health and safety activities			
Worker Engagement			
Communicates effectively			
Empowers workers and representatives			
Risk Management			
Identifies risks			
Assesses risks			
Controls risks			
Empowers workers and representatives			



The products

SafePlus will be available as three separate products:

Resources and Guidance

- 10 Performance Requirements fundamental to good health and safety
- Maturity Scales to measure performance
- Examples and case studies of best practice
- Guidance on how to use the resources

Onsite Assessment and Advisory Service

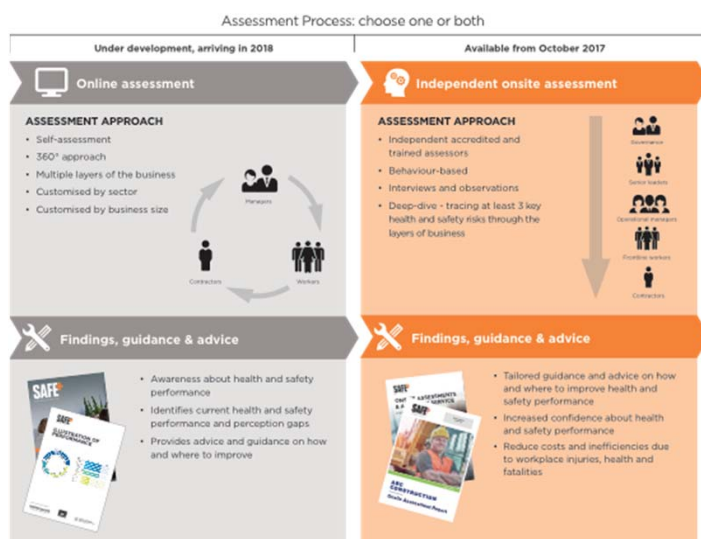
- Accredited and trained private market assessors
- Behaviour based onsite assessment
- Tailored guidance and advice on where and how to improve
- Measure health and safety performance
- Deep dive assessment

Online Self-Assessment

Mid 2018

- Identify gaps in health and safety
- Awareness of issues
- 360 degree input from managers, workers and contractors
- Advice and guidance on how and where to improve

Assessment process



Business benefits

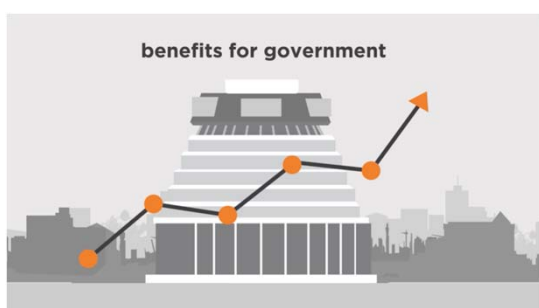
- Helps reduce workers' time off work, reducing your costs.
- Improves productivity due to safer, healthier, happier workers.
- Helps avoid the consequences and cost of workplace accidents and occupational harm.
- Boosts your reputation as an employer of choice, supports staff recruitment and retention.
- Gives you confidence that you're following a credible, government-approved standard.
- Provides an independent and qualified view of current health and safety performance.
- Tailors guidance and advice to support continuous improvement.
- Shows leadership in health and safety within industry and wider community.
- Increases your business confidence about how well you're managing your health and safety risks.

Workers benefits



- Helps reduce the likelihood of workplace accidents and illness.
- Can support worker behaviour and culture change.
- Reduces the financial burden and social impact of health and safety failure.
- Improves confidence that they'll be safe and healthy at work.
- Lets them know their employer takes health and safety seriously and has their best interests in mind.
- Supports the professional development of health and safety reps and managers in a business and practitioners in the market.

Government benefits



- Drives improved health and safety culture in New Zealand businesses.
- Reduces workplace fatalities, illnesses and accidents.
- Reduces health costs from workplace injuries and illnesses.
- Contributes to reducing workplace fatalities and injuries by 25% by 2020.

Point of difference

- This is a voluntary performance improvement toolkit for businesses.
- It's primary value is the qualified, independent advice and guidance to businesses to support their continuous improvement.
- It uses a behavioural evaluative assessment with a heavy focus on observation and interviews with workers at all levels.
- It is not a rating scheme – however businesses will receive an illustration of performance so can measure improvement over time.
- This is not a compliance audit product and it is also not a replacement for WSMP and WSD.

Assessors

- Independent accredited assessors will make the onsite assessments on how well businesses are performing against the toolkit's 10 performance requirements and provide advice and best practice guidance on how to improve.
- An accreditation process will ensure assessors have the right training and competency levels to deliver a behavioural assessment using SafePlus.
- If you're interested in becoming an assessor and for further information, email info@tracecare.co.nz

Next steps

- Next Accredited Assessor training courses scheduled October and November (first training was held in August).
- Accreditation body and training provider have been appointed. Competency assessments are underway.
- First batch of Guidance and Resources available at safeplus.nz
- Onsite Assessment and Advisory Service to follow in October.

For more information

- Email the SafePlus team at info@safeplus.nz
- Visit our website: www.safeplus.nz

