



TODAY...

- Why the focus on work-related health?
- What is '*work-related health*' and what's expected of duty holders?
- WorkSafe supporting businesses and workers to protect worker health



SUPPORTING WORKER HEALTH AND WELLBEING



WORKSAFE
NEW ZEALAND | HAKE KAIHAKA
ARTIKARA


SUPPORTING WORKER HEALTH AND WELLBEING



WORKSAFE
NEW ZEALAND | HAKE KAIHAKA
ARTIKARA

EVERY YEAR* ...

600 TO 900 DEATHS



*estimated figures

WORKSAFE
NEW ZEALAND | HAULI KAHORIWA
Kaitiaki Take Kōwhiri

EVERY YEAR* ...

30,000 NEW CASES OF
SERIOUS ILL-HEALTH



600 TO 900 DEATHS



*estimated figures

WORKSAFE
NEW ZEALAND | HAULI KAHORIWA
Kaitiaki Take Kōwhiri

EVERY YEAR* ...

MANY MORE UNREPORTED CASES

30,000 NEW CASES OF
SERIOUS ILL-HEALTH

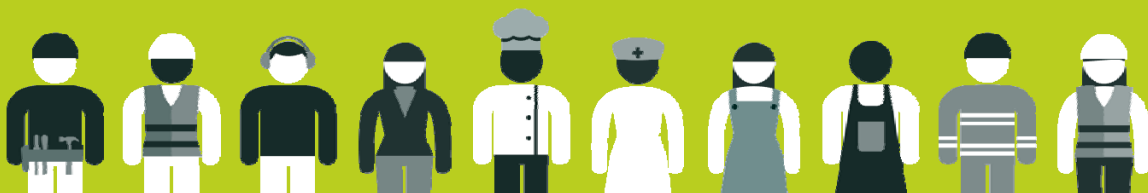
600 TO 900 DEATHS



*estimated figures

WORKSAFE
NEW ZEALAND | HAULI KAHORIWA
Kaitiaki

A TYPICAL WORKER IS



15 TIMES

MORE LIKELY TO DIE FROM
WORK-RELATED ILL-HEALTH THAN
A WORKPLACE SAFETY INCIDENT

WORKSAFE
NEW ZEALAND | HAULI KAHORIWA
Kaitiaki

BROADER IMPACT...

WORKSAFE
NEW ZEALAND | HAKI KAHIRIKA
AOTIAROA

A LONG-KNOWN ISSUE...



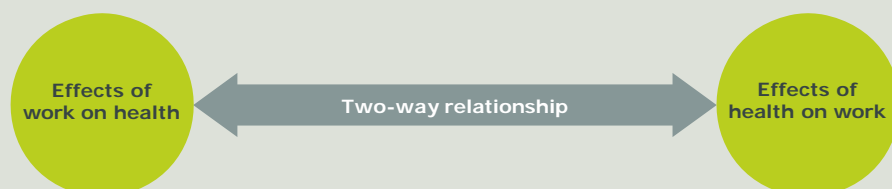
*"Our performance in **occupational [work-related] health** is very poor"*

*"...**occupational health** impacts of the workplace go **almost completely under the radar**"*

*"Occupational illnesses have significantly **worse human and financial impacts** than acute-harm incidents"*

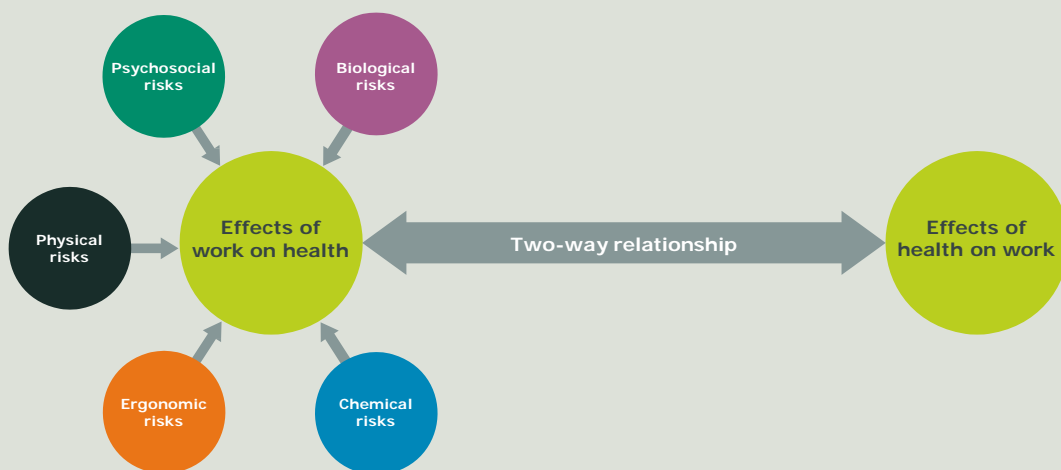
WORKSAFE
NEW ZEALAND | HAKI KAHIRIKA
AOTIAROA

What Is '*Work-Related Health*'?



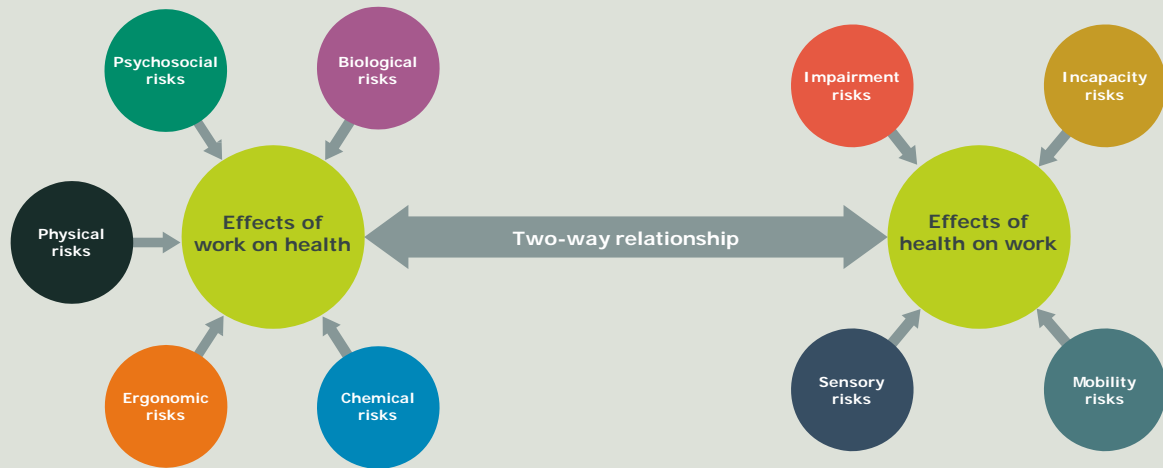
WORKSAFE
NEW ZEALAND | HAKE KAIHAKA
AOTEAROA

What Is '*Work-Related Health*'?



WORKSAFE
NEW ZEALAND | HAKE KAIHAKA
AOTEAROA

What Is 'Work-Related Health'?



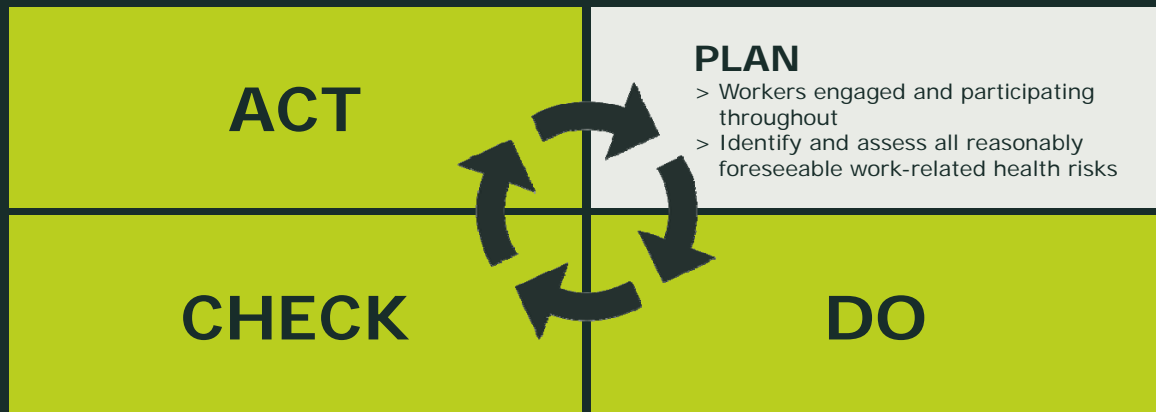
WORKSAFE
NEW ZEALAND | HAULI KAIHAKA
AOTEAROA

WORKSAFE'S EXPECTATIONS OF DUTY HOLDERS:



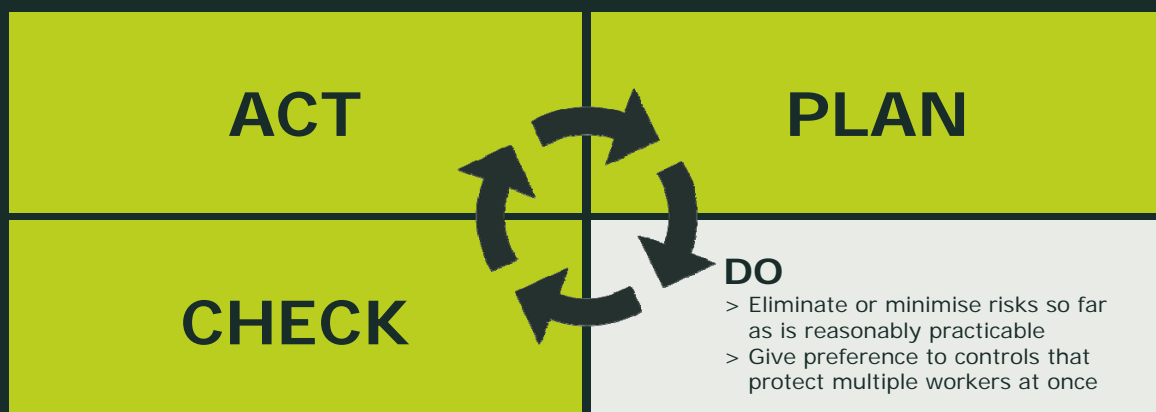
WORKSAFE
NEW ZEALAND | HAULI KAIHAKA
AOTEAROA

WORKSAFE'S EXPECTATIONS OF DUTY HOLDERS:



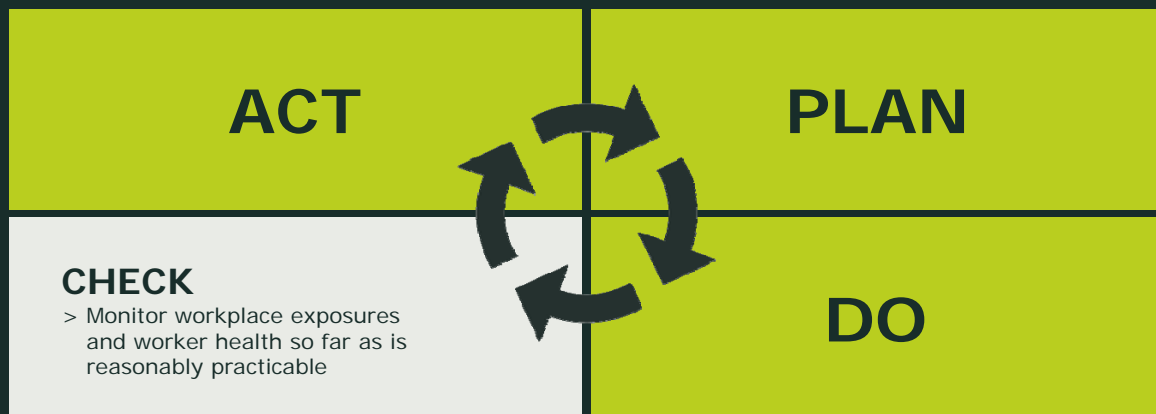
WORKSAFE
NEW ZEALAND | HAKI KAHORI | ACTIWADE

WORKSAFE'S EXPECTATIONS OF DUTY HOLDERS:



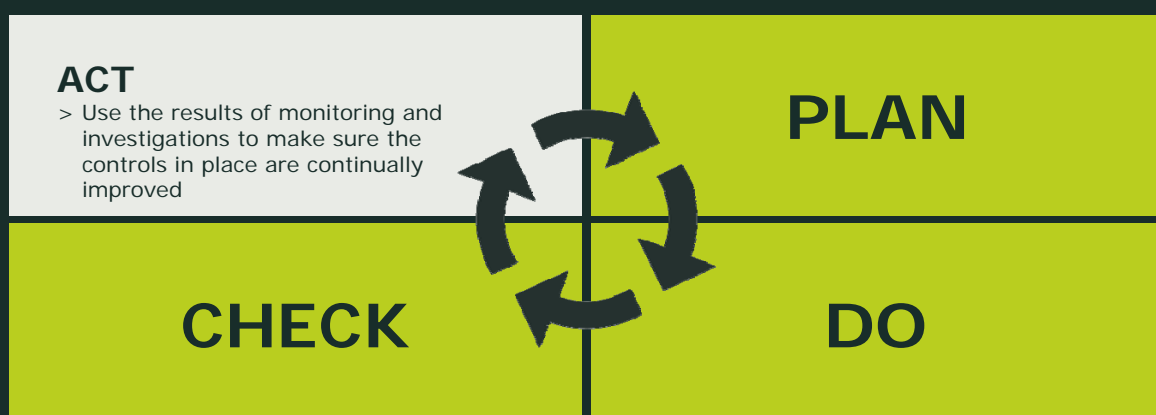
WORKSAFE
NEW ZEALAND | HAKI KAHORI | ACTIWADE

WORKSAFE'S EXPECTATIONS OF DUTY HOLDERS:



WORKSAFE
NEW ZEALAND | HAULI KAHORIWA
AOTIAROA

WORKSAFE'S EXPECTATIONS OF DUTY HOLDERS:



WORKSAFE
NEW ZEALAND | HAULI KAHORIWA
AOTIAROA

WORKSAFE'S LEVERS FOR CHANGE



WORKSAFE
NEW ZEALAND | HAUKEA KAIHAKA



▶ ENGAGE

With those who influence
the workplace


WORKSAFE
NEW ZEALAND | HAUKEA KAIHAKA



EDUCATE

What good looks like and how to take action

WORKSAFE
NEW ZEALAND | HAULI KAPAHU
KAPAHU KAPAHU



ENFORCE

Proportionately, consistently

WORKSAFE
NEW ZEALAND | HAULI KAPAHU
KAPAHU KAPAHU

WORKSAFE'S PLAN FOR WORK-RELATED HEALTH



INDUSTRY
LEADERSHIP



REGULATORY
EFFECTIVENESS



STEP CHANGE



WORKSAFE
NEW ZEALAND | HAKI KAWARAU
AOTIAROA

For more information visit:
worksafe.govt.nz



facebook.com/nzworksafe



linkedin.com/company/worksafe-new-zealand



twitter.com/WorkSafeNZ

WORKSAFE
NEW ZEALAND | HAKI KAWARAU
AOTIAROA

